

PIMS VISITORS' GUIDE



Welcome to Vancouver,
British Columbia

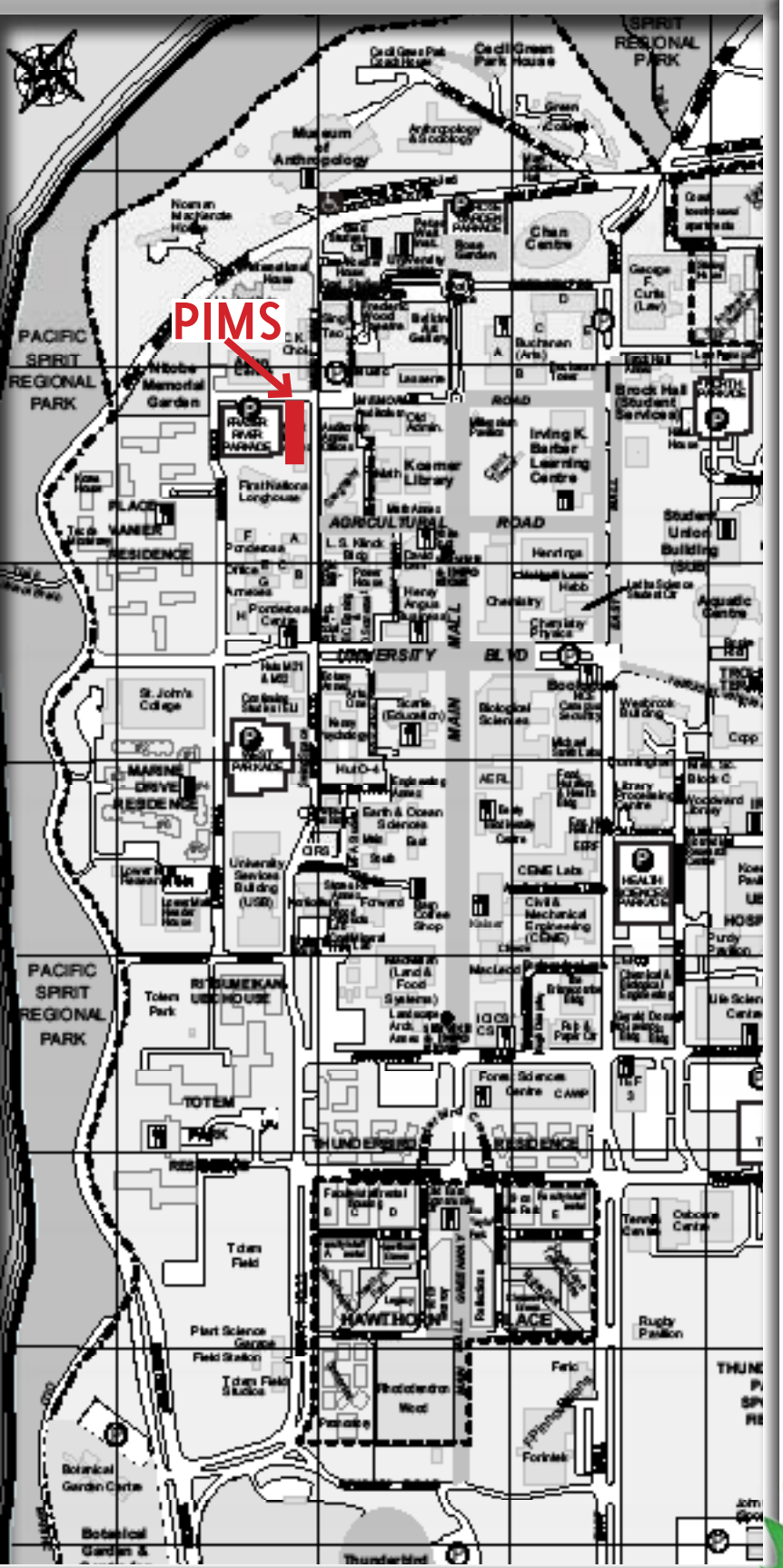
PIMS UBC
200-1933 West Mall
University of British Columbia
Vancouver, BC
V6T 1Z2

Phone: 604-822-3922
Fax: 604-822-0883
Email: reception@pims.math.ca
Hours: Mon-Fri 8:30-4:30
www.pims.math.ca/



Table of Contents

PIMS Overview	2
Arriving at PIMS	4
Finances	5
Visa & Work Permits	7
Medical Services	9
Surviving at PIMS	10
Library Access	11
Accommodation	12
Dining at UBC	13
Dining Off-Campus	14
Activities, Entertainment & Shopping	15
Transportation	19
Being Part of PIMS	20
Contacts	21
Maps	End



PIMS OVERVIEW

The Pacific Institute for the Mathematical Sciences (PIMS) is a collaborative mathematical institute distributed across Western Canada and the Pacific Northwest. Our mandate is to promote research in the mathematical sciences, to facilitate the training of highly qualified personnel, to enrich public awareness of and education in the mathematical sciences, and to create partnerships with similar organizations in other countries, with a particular focus on the Pacific Rim.

PIMS has built an international reputation for excellence and transformed the conditions of mathematical research in Canada. Our innovative Collaborative Research Groups bring researchers together across geographical and disciplinary distances. Our postdoctoral fellowships attract outstanding young scientists to contribute to PIMS research programs for two years, some of whom later become faculty members at leading Canadian and international universities. Our international summer schools train the new generation of mathematical scientists in emerging areas of mathematics and its applications.

Our Community

PIMS is a partnership among a diverse and flourishing community in support of the mathematical sciences:

:: The 8 PIMS partner universities (Simon Fraser University, the University of Alberta, the University of British Columbia, the University of Calgary, the University of Victoria, the University of Regina, the University of Saskatchewan and the University of Washington) and the affiliated institutions (the University of Lethbridge, University of Northern British Columbia and Portland State University).

:: The Government of British Columbia through the Ministry of Competition, Science and Enterprise; the Government of Alberta through the Ministry of Innovation and Science; the Government of Canada through the Natural Sciences and Engineering Research Council of Canada.

:: More than 350 scientists in our member universities who are actively working towards the Institute's mandate. Their disciplines include pure and applied

mathematics, statistics, computer science, physical, chemical and life sciences, medical science, finance, management and several engineering fields.

PIMS Collaborative Research Groups (CRGs)

CRGs are a unique model for the development of mathematical sciences worldwide. Unlike traditional thematic programs, which rely on gathering scholars from one discipline in a single location for a period of time, PIMS CRGs develop permanent research and training networks, establish lasting links across several locations, provide mentorship for postdoctoral fellows and graduate students, and enhance the profile of Canadian researchers. Summer schools, workshops, distinguished visitors and ongoing seminars are integral to CRGs.

PIMS CRGs have produced mathematical research of the highest quality, while simultaneously pioneering emerging applications of mathematics to fields of societal interest, all in a framework of sustained collaboration with lasting impact.

The PIMS CRG program has had a significant impact on the recruitment of new faculty in Canada. Furthermore, there is currently no other mechanism in Canada to enable young researchers to obtain the resources and networking capabilities to develop their full potential as international researchers: PIMS thus plays a pivotal role in enabling Canadian mathematical scientists to forge a world-wide position of leadership in strategic areas.

Current PIMS CRGs:

- 20 - Operator Algebras and Non-commutative Geometry: 2009-2012
- 21 - Number Theory: 2010-2013
- 22 - Mathematics of Quantum Information: 2010-2013
- 23 - Applied and Computational Harmonic Analysis: 2011-2014

PIMS OVERVIEW



PIMS International Graduate Training Centres (IGTC)

PIMS is working towards creating IGTCs in strategically chosen areas of mathematics. Each of these centres will develop a specialized graduate program at one or several PIMS universities. The program may include topical PIMS summer schools, annual research summits, new term-time courses, seminars, graduate student exchanges, and international visitors.

In 2007 PIMS established an IGTC in Mathematical Biology based primarily at the Universities of Alberta and British Columbia. After 2012 a new IGTC is slated to be opened in another strategic area.

PIMS supports education

PIMS sponsors and coordinates a wide assortment of educational activities for the K-12 level, as well as undergraduate, graduate, women and aboriginal students. Many of the best PIMS research scientists are involved in these activities.

PIMS is dedicated to increasing public awareness of the importance of mathematics in the world around us. We want young people to see that mathematics is a subject that opens doors to more than just careers in science. Many different and exciting fields in industry are eager to recruit people who are well prepared in this subject.

PIMS believes that training the next generation of mathematical scientists and promoting diversity within mathematics cannot begin too early. From its inception, PIMS has supported a series of educational initiatives:

- :: Organizing interesting, fun and challenging math events for children of all ages, such as Math Fairs in Alberta, Math Mania and Elmacon in B.C. and math camps across British Columbia.

- :: Coordinating workshops to create links of communication between parents, teachers, mathematicians and math-educators.

- :: Publishing Pi in the Sky, a math magazine for high school students, to promote mathematics, increase the involvement of high school students in mathematical activities, and promote careers in mathematical sciences:

www.pims.math.ca/resources/publications/pi-sky

In 2005, PIMS began promoting numeracy and mathematical education in First Nations communities. We have established a partnership with the First Nations Education Steering Committee in B.C., and over the years, PIMS has organized teacher training sessions, mentorship programs and support networks.

Colleges and universities wishing to enjoy an affiliation with PIMS (but not eligible for regular PIMS membership) may engage as PIMS Education Associates and be entitled to apply for PIMS funding for appropriate education, outreach, and professional development activities in their region. To date, 7 BC colleges have become PIMS Education Associates: Camosun College, Vancouver Island University, Okanagan College, University of the Fraser Valley, Langara College, Thompson Rivers University, and Douglas College, and 4 in Alberta: Concordia University College, Grant McEwan University, Red Deer College and Mount Royal University.



Arriving at PIMS

- 1 Upon your arrival at West Mall Annex, come to the reception area on the south end of the second floor. Ask for the Executive Assistant who will give you a tour and an introduction to the Institute and its staff.
- 2 You will be given a key to the building and a key to your office (if one has been assigned to you). Otherwise, you will receive a form to enable you to pick up a key from UBC Access Control (2nd floor of the General Services Administration Building).
- 3 If your visit is funded, you can also pick up a reimbursement claim form from the Finance Manager (room 204).

Get Acquainted With Your Space

Phones

Your office will be equipped with a telephone.

- :: On-campus calls are 5 digits 2-xxxx

- :: Off-campus calls are 11 digits 9-604-xxx-xxxx

- :: For long distance within North America dial 8-1 and then your number

- :: For long distance outside North America dial 8-011 and then the country code and then your number

You can always ask for help if you need it!

Faxing

The PIMS fax number is 604-822-0883. You can send faxes from the machine in the copy room. Documents must be placed into the machine face up.

- :: See **Phones** section above for how to dial

Computers

Your PIMS office may contain a computer for your use. PIMS computer account information and technical assistance is available from the Systems Manager (room 207).

Email & Internet - www.it.ubc.ca/service_catalogue/internet_telephone/wireless.html and www.it.ubc

Short-term visitors can use the UBC wireless visitor network for email and light web browsing at no charge. Simply select the "ubcvisitor" network on your computer or smartphone. Then open up a web browser, and you will be directed to the login page.

Intermediate-term visitors should use the ubc or ubcsecure wireless network. For this you will need a Campus-Wide Login (CWL) account. Your sponsor will help sign you up.

Long-term visitors should use their UBC ID numbers to set up a CWL account, or contact the Systems Manager (room 207) to set up a PIMS account.

Visitors from other educational institutions which support eduroam, can use the eduroam service.

***Your PIMS or Math Department sponsor will advise you as to whether you have an office in the PIMS building (WMAX).

Finances



Financial Support

See the Finance Manager (room 204) to answer any outstanding questions regarding funding for your visit to PIMS.

Claims for Reimbursement of Expenses

Your sponsor or conference organizer will advise you as to what level of funding is available to support your visit. If this funding is to cover travel and/or local expenses, please secure the form from the conference organizer. Complete the form and attach original receipts for all items for which you are claiming reimbursement. Send the form to the Finance Manager at the PIMS-UBC office.

Important Notes:

:: If you are claiming reimbursement for a flight, please attach your itinerary/itemized receipts/boarding passes.

:: PIMS will only reimburse economy flights. If you travelled on a more expensive ticket, attach a quote for an economy ticket to your claim and you will be reimbursed that amount.

:: expense payments will be mailed to the address on your form unless you request otherwise

:: if you are only requesting partial reimbursement from PIMS, still present your original itemized receipts - these will be stamped and signed as being part-paid - photocopies will then be made and we will return the originals so you can claim co-funding from your other sources

:: If you are claiming per diem support then no receipts are needed. The UBC rate is \$50.50/day but will be adjusted if some meals are provided.

:: Let us know if you prefer to receive your payment electronically. We will need:

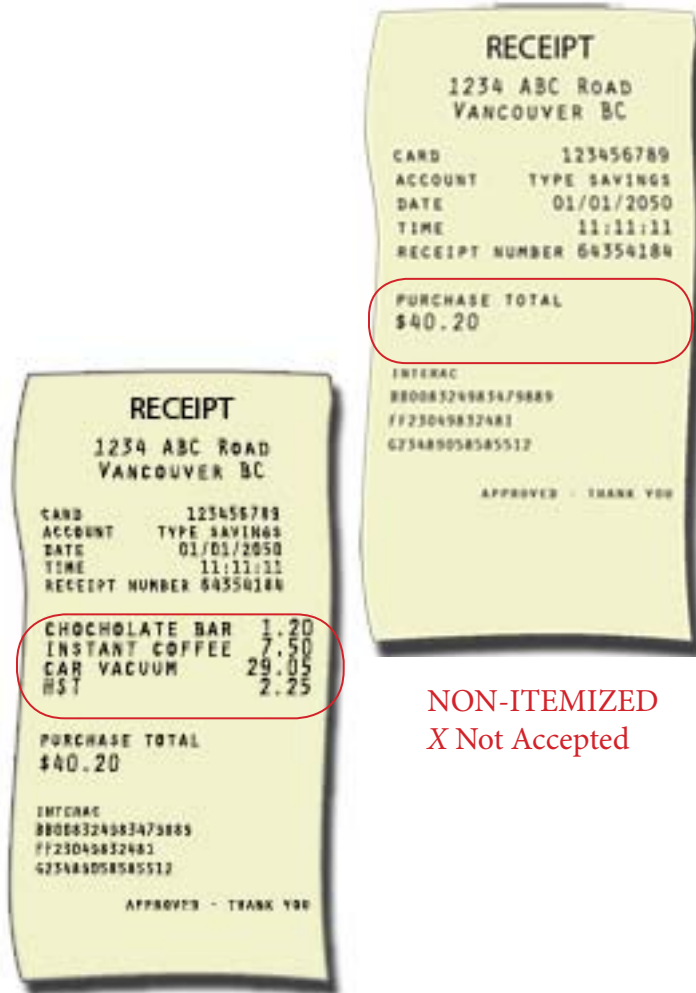
- name/address of your bank
- SWIFT/BIC code of your bank
- your full name/address/phone #
- your bank account #

:: if you are an academic visitor only receiving expense

reimbursement, you do not need a work permit for your visit to PIMS. However, you may require a visa in order to enter Canada from your home country. Check to see if you need a visa for your PIMS visit at www.cic.gc.ca/english/visit/

*** we can issue cheques or drafts in Canadian, US and most European currencies

*** expense claims can take up to 4 weeks to process



ITEMIZED RECEIPT
✓ Accepted

NON-ITEMIZED
X Not Accepted

Finances

Opening a Bank Account

You will need a primary ID (passport, credit card, bank card), an amount to deposit and proof of residence. A Social Insurance Number (SIN) may be required. If you are non-Canadian, you will need to bring your Canadian immigration document to open the account. Since different banks require different documents, ask first!

Applying for a Social Insurance Number

www.servicecanada.gc.ca/eng/sin/apply/how.shtml

Taxes

Harmonized Sales Tax (12%) on most goods and services

Income Tax Payable on Research Stipends and Honoraria

Non-Canadians are required to pay taxes in Canada for income received. You're deemed a resident of Canada for tax purposes if any of the following apply:

- you stay in Canada for 183+ days
- you have residential ties with Canada
- you aren't considered a resident of another country under the terms of a tax treaty between Canada and that country

See: www.cra-arc.gc.ca/tx/nrrsdnts/trty-eng.html

**if you are deemed a resident of another country under a tax treaty, you must contact the International Tax Services Office for the rules that apply to you.

See: www.cra-arc.gc.ca/tx/nrrsdnts/ndvdl/menu-eng.html

Research Stipends

Post-doctoral fellows who are part-funded by PIMS must provide the following information:

- :: local address and email address
- :: anticipated start date
- :: work permit (if applicable)
- :: Social Insurance Number

Honoraria

In order to process an honorarium, we will require the following information:

- :: full name
- :: mailing address
- :: social insurance number (if applicable)
- :: dates in Canada (if you are not a Canadian resident)
- :: dates of service (dates of lectures, talks or collaboration)

Banks on or near Campus

Bank of Montreal (BMO)

2142 Western Parkway
(604) 665-7076

CIBC

5796 University Boulevard
(604) 221-3550

HSBC

4480 10 Ave W
(604) 228-1421

Royal Bank of Canada (RBC)

5905 Berton Ave
(604) 221-5702

Scotiabank

4566 West 10th Avenue
(604) 221-3750

TD Canada Trust

4597 10th Avenue West
(604) 224-6388

Vancity

4545 West 10th Avenue
(604) 877-7000

Visas & Work Permits

Visitors who have been offered support only to reimburse their expenses do not need a work permit while in Canada. **A work permit is only required if a stipend or honorarium is offered.**

Invitation Letters

If you need an official invitation letter in order to obtain a visa/work permit, contact reception@pims.math.ca with:

- 1) the name of the event you are attending at PIMS
- 2) your travel dates
- 3) your mailing address

Speakers

Guest speakers, commercial speakers or seminar leaders can speak or deliver training in Canada without a work permit as long as the event lasts no longer than 5 days.

Organizers

Organizers and administrative staff of international meetings or conventions being held in Canada do not need a work permit.
www.cic.gc.ca/english/work/apply-who-nopermit.asp

Work Permits for Spouses/Partners

Spouses/partners accompanying Post-Doctoral Fellows or long-term PIMS visitors receiving stipends are eligible for employment once they arrive in Canada. It's the Spousal Employment Authorization initiative:
www.cic.gc.ca/english/information/faq/work/index.asp (see #7) They will need:

- 1) a valid passport
- 2) the work permit of the Post-Doctoral Fellow spouse or partner

Visitors from the United States

You can apply for a work permit directly at the Port of Entry to Canada. Provide the Immigration Officer with all documentations and payments:

- 1) application fee
- 2) citizenship card or passport
- 3) degree certification
- 4) letter of engagement

School-Aged Children of Non-Canadians (dependent children under the age of 18)

:: When entering Canada with an adult holding a valid work permit, school-aged or dependent children generally do not need a permit to study in Canada.

:: Indicate on the work permit application that dependent children will be entering Canada with the applicant.

:: Parents/guardians must provide the child's birth certificate, citizenship card, health records, and passport when entering Canada.

:: Some children may be required to submit a study permit application independently of his/her parent's or guardian's work permit.

:: If the Post-Doctoral Fellow or Visitor to PIMS is not a Canadian Resident, the child will be considered an International Student. Please consult the Vancouver School Board to find out more about registering your children at a local school:
www.vsb.bc.ca/contact

:: International Post-Doctoral Fellows will hold a valid work permit once in Canada. This permit allows parents and guardians of international students to enroll their child in a public school for free. However, parents/guardians must provide the school with a number of documents prior to entering their child in a school.

:: It is the responsibility of the Post-Doctoral Fellow or PIMS visitor to carefully review the application procedures and permit limitations prior to submitting his/her application to Citizenship and Immigration Canada.

:: Please consult with a CIC representative at a Canadian embassy, high commission, or consulate to ensure that the proper procedures are followed.

Visas & Work Permits

For Citizenship and Immigration Canada (CIC) info:
www.cic.gc.ca/english/

For a list of countries whose citizens require visas to enter Canada:
www.cic.gc.ca/english/visit/visas.asp

Find out if you are eligible for a visa:
www.cic.gc.ca/english/visit/apply-who.asp

For how to apply for a visa:
<http://www.cic.gc.ca/english/visit/apply-how.asp>

What to expect on arrival:
<http://www.cic.gc.ca/english/visit/arriving.asp>

Frequently Asked Questions:
<http://www.cic.gc.ca/english/information/faq/visit/index.asp>

For a list of embassies and consulates:
www.embassyworld.com/

Please do your research!

The information on Visas & Work Permits is for guidance only. It should not be considered as professional legal advice. Please research the regulations as they apply to your specific situation.



Medical Services



Health and Dental Services

All BC residents are required to have basic medical coverage through the BC Medical Services Plan (MSP)

Foreign academics holding work permits are considered residents of BC by MSP.

Visitors to Canada on a Visitor Visa are not considered residents of BC.

Please note that there is a 3 calendar-month waiting period to be enrolled into MSP - you can submit your application in advance.

:: During the waiting period, we encourage you to have private coverage which can be purchased through a local insurance agency. This coverage can also be obtained if you are not eligible for MSP.

Depending on your rank and length of appointment, you may be eligible to receive benefits. You should have been provided with a letter containing your payroll and benefits code. Faculty benefits information is available online.

Medical Facilities

:: University Village Medical and Dental Clinic
228-2155 Allison Road
604-222-2273
www.universityvillageclinic.com
Mon-Fri: 8am - 6pm
Sat: 10am - 4pm

:: UBC Dental Clinic (Nobel Biocare Oral Health Centre)
2151 Wesbrook Mall
604-822-2112
www.dentistry.ubc.ca/dental_clinic
open end of Aug - end of June
9:30am - 12:30pm & 2pm - 5pm

:: University Hospital
2211 Wesbrook Mall
604-822-7121
www.vch.ca/EN/find_locations
/find_locations/?&site_id=164
24 hr emergency

:: Broadway and Burrard Walk-In Clinic
1816 W. Broadway
604-736-1888
daily 9am - 9pm

:: Vancouver General Hospital
899 West 12th ave
604-875-4111



Surviving at PIMS

Emergency/Fire/Safety

Emergency: dial 911 for Police, Fire or Ambulance

UBC Campus Security
:: emergency 604-822-2222
:: non-emergency 604-822-8609

Note: Should the fire alarm sound continuously, please leave the building immediately via the nearest exit. The fire alarm is periodically tested with a short burst - this testing can be disregarded.

UBC Safewalk
:: UBC offers a Safewalk. Call to get a co-ed pair of walkers to escort you safely on campus.
:: 604-822-5355



Mail Service

:: Incoming mail is delivered to PIMS daily at around 11 am. The Executive Assistant will email you to let you know if you have mail. It will be in the tray under the shelf under the whiteboard in Reception for you to pick up.

:: Outgoing mail is collected by Campus Mail when they bring the incoming mail. Research-related mail can be left with the Executive Assistant for mailing. Personal mail can be dropped in the red post-box at the junction of West Mall and Agricultural Road, just a few steps down the street to the south.

:: There is also a Canada Post outlet in the Student Union Building (SUB) where you can buy stamps, send packages, or courier mail.

Parking

:: The nearest parkade to PIMS is the Fraser River Parkade behind WMAX. There is also parking available at the junction of West Mall & Memorial Road.

:: You can find out everything you need to know about parking at UBC from the Parking and Access Control Department on the second floor of the General Services and Admin Building or visit www.parking.ubc.ca

Lost and Found

:: UBC's Central Lost and Found is located at the Campus Security Office at 2133 East Mall next to the UBC Bookstore. Before checking at UBC's Central Lost and Found, check the lost and found of the building you are in, usually at the reception area.

:: open Mon-Fri 9am - 4:30pm (closed on statutory holidays)

:: 604-822-9922



Library Access

Anyone is welcome to use the collections of UBC Library on site, but to borrow books you will require a UBC Library card.

Visitors may qualify for UBC Library privileges on a free or paid basis, depending on the degree of affiliation. Please consult the following categories to see which applies to you.



Faculty, Staff and Students from certain post-secondary institutions

The UBC Library has established reciprocal borrowing arrangements with other institutions. Check to see if your home university or college is listed.

- 1) Canadian Universities
www.curba.ca/rbprov.html
- 2) BC Colleges and Institutes
www.cpsld.ca/page/membership%20list.aspx
- 3) US Universities
www.oclc.org/membership/advisorycommittees/profile8.htm

If eligible, you will receive a free community borrower card - just follow the instructions on the website:
www.library.ubc.ca/home/reciprocal-visiting.html

Other Visitors

You may purchase a UBC Library community borrower card:

- :: \$40/term
[Sept-Dec] [Jan-Apr] [May-Aug]
- :: \$120/academic year
- :: Senior's rate: \$40/year (aged 65+)

www.library.ubc.ca



Main UBC Libraries

- :: **Walter C. Koerner Library**
1958 Main Mall V6T 1Z2
- :: **Irving K Barber Learning Centre**
1961 East Mall UBC
(math books are located in the Science and Engineering library on the 4th floor)

PIMS Library

Room 101 in the PIMS building.

Visiting Faculty with a UBC Visiting Appointment

You can apply for a faculty UBC card at the UBC Carding Office in the UBC Bookstore.

www.ubccard.ubc.ca

Your UBC department must have issued a UBC visiting faculty appointment according to Faculty Relations procedures.

www.hr.ubc.ca/faculty-relations/recruitment/titles-ranks-descriptions/visitors/

Visitors Collaborating with UBC Faculty Members on their Research

The UBC faculty member may authorize you to borrow under his/her own Library privileges. Ask the UBC faculty member to complete the Faculty Authorization Application Form and bring it to one of the UBC Library locations listed on the form to get your card.

Accommodation

On Campus

West Coast Suites ★★★★★
5959 Student Union Boulevard
<http://www.ubconferences.com/accommodations/west-coast-suites/>
Tel: 604-822-1000
Fax: 604-822-1001
Email: reservations@housing.ubc.ca

St. John's College
2111 Lower Mall
<http://www.stjohns.ubc.ca/GuestRooms.stm>
Tel: 604-822-6522
Fax: 604-822-8885
Email: sjc.reception@ubc.ca

Green College
6201 Cecil Green Park Road
<http://www.greencollege.ubc.ca/>
Tel: 604-822-8660
Fax: 604-822-8742
Email: gc.reception@ubc.ca

Vancouver School of Theology
6000 Iona Drive
<https://www.vst.edu/main/rooms/book-guest-room>
Tel: 604-822-9031
Fax: 604-822-9212

Carey Centre
5920 Iona Drive
<http://www.careycentre.com>
Tel: 604-224-4308
Fax: 604-224-5014
Email: info@carey-edu.ca

St. Mark's College Guesthouse
5935 Iona Drive
<http://www.stmarkscollege.ca>
Tel: 604-822-6862 Ext. 489
Email: guestroom@stmarkscollege.ca

Triumf Guesthouse
5835 Thunderbird Blvd
<http://www.triumfhouse.ca/>
Tel: 604-222-7633
Fax: 604-222-7647
Email: housing@triumf.ca

www.ubconferences.com/accommodations



Off Campus

Four Seasons ★★★★★
791 West Georgia Street
Tel: (604) 689-9333
Fax: (604) 684-4555

The Listel Hotel ★★★★★
1300 Robson Street
604-684-8461

Pan Pacific ★★★★★
300-999 Canada Place
(604) 662-8111

Sutton Place Hotel ★★★★★
845 Burrard Street
(604) 682-5511

Shaughnessy Village ★★★
1125 west 12th ave
604-736-5511

Bed & Breakfasts:

Point Grey Guesthouse ★★★★★
4103 West 10th Ave
(604) 222-4104
<http://www.pointgreyguesthouse.com/>

Kitsilano Heritage House ★★★★★
2455 West 6th Avenue
604-732-8004
<http://www.kitsbb.com/>

Maple House ★★★★★
1533 Maple Street
604-739-5833
<http://www.maplehouse.com/>

University Rates:

Park Inn & Suites ★★★★★
898 West Broadway
604-872-8661
May 1, 2011 - Oct 14, 2011 \$139
Oct 15, 2011 - Dec 31, 2011 \$90
Rates per night for standard room with 2 double beds

Help looking for Accommodation:

www.makeyourselfathome.com/
604-874-7817
Email: info@makeyourselfathome.com

www.tourismvancouver.com/visitors/accommodation

www.hellobc.com/en-CA/AccommodationSpecialOffers/Vancouver.htm

www.airbnb.com

Dining at UBC

On Campus

In the Student Union Building

6138 Student Union Boulevard
:: The Gallery (Montreal-style bagels)
:: The Pit Pub (quarter pound patties and burger specials everyday)
:: Pie R Squared (pizza)
:: Honour Roll (sushi)
:: The Pendulum (pasta, sandwiches, etc)
:: The Delly
:: Subway
:: A&W
:: Koya Japan
:: Pizza Pizza
:: Manchu Wok
:: Pasta/Salad/Soup Bar

Tim Hortons

2424 Main Mall
Mon-Fri: 7:30am - 6pm

The Boulevard Coffee Roasting Co.

5970 University Boulevard
Mon-Fri: 6:30am - 10pm
Sat-Sun: 7am - 10pm

Mahony & Sons Public House

5990 University Boulevard
Mon-Wed: 11am - midnight
Thurs-Fri: 11am - 1am
Sat: noon - 1am
Sun: noon - 11pm

University Village Restaurant

5778 University Boulevard
Mon-Sat: 11am - 10pm
Sun: 4pm - 10pm

Sage Bistro

6331 Crescent Road
Mon-Wed 7:15am-9am, 11:30am-2pm
Thu-Fri 7:15am-9am, 11:30am-2pm, 3:30pm-8pm

White Spot

2015 Main Mall
11am - 8pm daily

Caffé Perugia

2350 Health Sciences Mall
Mon-Fri: open for breakfast & lunch

Blenz

5784 University Boulevard
:: Winter Hours
- Weekdays: 6am - 12am
- Weekends: 7am - 11pm
:: Summer Hours
- Weekdays: 7am - 11pm
- Weekends: 8am - 10pm

UBC Marketplace

University Boulevard between Western Parkway and Allison Road
:: Pearl Fever Tea House
:: Starbucks Coffee
:: Combo Express
:: Donair Town
:: Vera's Burgers
:: Only U Cafe
:: Oven Fresh Bakery
:: Pita Pit
:: One More Sushi
:: and more!



www.food.ubc.ca

Dining Off-Campus

Near Campus

On 10th Avenue, within 10 minutes of campus:

Candia Taverna (\$15-\$30)

4510 West 10th Avenue
Greek food + pizzas and pastas
604-228-9512

Provence Mediterranean Grill (\$45+)

4473 West 10th Avenue
604-222-1980

Some Kinda Pasta (\$15-\$30)

4409 West 10th Avenue
604-222-0220

On West Broadway, within 15 minutes of campus:

Athene's (\$15-\$30)

3618 West Broadway
Greek food
604-731-4135

Aoki Sushi (\$15-\$30)

1888 West Broadway
604-731-5577

Banana Leaf (\$30-\$45)

3005 West Broadway
Malaysian food
604-731-6333

Maurya Indian Cuisine (\$30-\$45)

1643 West Broadway
604) 734-3005

Sunshine Diner (\$10-\$15)

2649 West Broadway
(604) 733-7717

More close eats:

The Keg (\$15-\$30)

1499 Anderson Street
Steak/Seafood
604-685-4735

Handi's Restaurant (\$15-\$25)

4432 Dunbar Street
Indian food
(604) 738-3186

The Dunbar (\$10-\$15)

4497 Dunbar Street
(604) 222-9922

Jethro's Fine Grub (\$10-\$15)

3420 Dunbar Street
(604) 569-3441

University student hangouts:

The Eatery (\$10-\$20)

3431 West Broadway
Japanese fusion
604-738-5298

Koerner's Pub (\$15-\$25)

6371 Crescent Road
(604) 822-0983

www.tourismvancouver.com/visitors/dining

www.vancouver-bc.com/restaurants

www.opentable.com

www.zagat.com

www.dinehere.ca

www.urbanspoon.com

Activities, Entertainment & Shopping

Activities and Entertainment On Campus

- :: The Birdcoop Fitness Centre**
 - 6000 Student Union Blvd. (in the Student Recreation Centre)
 - \$9 daily drop-in
- :: Thunderbird Arena skating arena**
 - 6066 Thunderbird Blvd.
- :: UBC Aquatic Centre pool**
 - 6121 University Blvd.
- :: Pacific Spirit Regional Park**
 - parking available at 4915 W. 16th ave.
 - hiking and biking trails
- :: UBC Tennis Centre**
 - 6160 Thunderbird Blvd.
 - indoor courts \$16/hr and outdoor courts \$5/hr
- :: UBC Golf Club**
 - 5185 University Boulevard
 - 604-224-1818
- :: UBC Botanical Garden**
 - 6804 SW Marine Drive
 - Canada's oldest university garden \$12 entrance fee
- :: Norm Theatre**
 - 6138 Student Union Boulevard
 - check the schedule:
<http://ubcfilmsociety.com/>
 - \$5 general admission/ \$2.50 children
- :: Museum of Anthropology**
 - 6393 N.W. Marine Drive
 - 604-822-5087
 - adult admission \$14
- :: Wreck Beach**
 - University Blvd & NW Marine Dr
 - a clothing-optional beach

Shopping

- :: Shoppers Drug Mart**
 - 5940 University Boulevard
- :: Liquor Store**
 - #102A - 2158 Western Parkway
- :: Granville Island Produce**
 - 5767 Dalhousie Road
- :: Bakery**
 - 2136 Western Parkway
- :: UBC Bookstore**
 - 6200 University Boulevard
- :: Save on Foods**
 - 5945 Berton Avenue
(corner of Wesbrook and 16th ave)



www.attractions.ubc.ca

Activities, Entertainment & Shopping

Activities and Entertainment Off Campus

- Oakridge Centre**
 - Cambie and West 41st
 - <http://oakridge.shopping.ca>
 - 604-261-2511
 - Oakridge provides free parking. By transit, take bus #41. For trendy shopping in glass-covered comfort, the Oakridge Centre offers over 150 stores and services. It also has its own movie theatre (Empire), located near the White Spot.
- Pacific Centre Shopping Mall**
 - 550-700 West Georgia
 - www.pacificcentre.com
 - 604-688-7235
 - Located in downtown Vancouver, it hosts famously luxurious brands - from Holt Renfrew to Hugo Boss. Paid parking is available in the underground parking lot.
- Gastown**
 - **in the area of Water Street
 - www.gastown.org
 - If you're looking for Northwest Coast and Inuit art and crafts, head for historic Gastown. Two must-visit shops are the government licensed Inuit Gallery of Vancouver and Images For A Canadian Heritage
- Granville Island**
 - www.granvilleisland.bc.ca
 - Artisans and craftsmen—potters, weavers, textile artists, designers, jewelers—all occupy a complex of once empty warehouses, foundries and machine shops. Check out local artists' work at the many galleries.
- Robson Street**
 - www.robsonstreet.ca
 - Robson Street is a "see and be seen" street for wining, dining and shopping. Robson is to Vancouver what Rodeo Drive is to Los Angeles. Browse the high-end fashion boutiques mixed among the coffee shops and small local run groceries in downtown Vancouver.
- Point Grey's West 10th Avenue**
 - This beautiful neighbourhood street runs from Alma to the University Gates with a casual mix of stores. A

pleasant walk from UBC along the perimeter of the University Golf Club will lead you to this; one of the oldest communities in Vancouver.

Chinatown

**East of Downtown on Pender at Main
www.vancouver-chinatown.com/
Vancouver's Chinatown is the second-largest Chinatown in North America (after San Francisco's) and well worth a visit. Here you'll find everything from ginseng to green tea, fine embroidered linens, silk robes, splendid and exotic fresh produce plus traditional Chinese wares and one of the world's narrowest buildings (at the corner of Carrall and Pender).

Richmond Centre (Richmond)

6551 No. 3 Road, Richmond
<http://www.richmondcentre.com>
604-713-7467
Richmond Centre also provides free parking. It is also convenient to take the Canada Line to the Richmond-Brighouse station. Shop at American Eagle, Boys' Co, Jacob, Sephora, and more.

Metrotown Shopping / Entertainment Complex (Burnaby)

4700 Kingsway
www.metropolisatmetrotown.com/
604-438-4700
Metrotown is BC's largest shopping complex with over 450 stores, services, theatres, and restaurants—including The Bay, Sears, Zellers, and Chapters. It is easy to get to by Sky Train, car or bus and there is free parking at all adjoining centers (Metrotown, Eaton Centre and Station Square).

Activities, Entertainment & Shopping

Things To Do in Vancouver

Arts Club Theatre Company

www.artsclub.com

604-687-1644

The company exhibits a variety of live shows on 3 stages in Vancouver:

Stanley Industrial Alliance Stage @ 2750 Granville Street, Granville Island Stage @ 1585 Johnston Street, and New Revue Stage @ 1601 Johnston Street. Tickets may be obtained in advance from Ticketmaster or at the box office in the SUB building on the UBC campus.

Bard on the Beach (summertime only)

www.bardonthebeach.org

604-739-0559

Shakespeare's plays staged outdoors down by Kitsilano Beach in Vanier Park. Tickets may be obtained in advance from Ticketmaster or at the box office in the SUB building on the UBC campus.

Queen Elizabeth Theatre

vancouver.ca/commsvcs/cultural/theatres/qet/index.htm

Stages large live performances. Located downtown at Hamilton at Dunsmuir Street. The theatre telephone number is 604-665-3050. Tickets may be obtained in advance from Ticketmaster or at the box office in the SUB building on the UBC campus.

The Vancouver Police

Centennial Museum

240 E. Cordova Street

www.vancouverpolicemuseum.ca

604-665-3346

In addition to historical displays of some of Vancouver's best-known crimes (and the morgue where Errol Flynn lay after his death), you'll find a strong educational component and a modern hands-on atmosphere such as weaponry displays, and a 6'x 26' mural (110 year history of the Vancouver Police Department). Open Mon-Sat 9am-5pm year round. Closed over statutory holidays.

The Centre in Vancouver for Performing Arts

www.centreinvancouver.com

604-602-0616

Stages mostly musicals. Located downtown at 777 Homer Street. Tickets may be obtained in advance from Ticketmaster or at the box office in the SUB building on the UBC campus.

5th Avenue Cinemas

2110 Burrard

www.festivalcinemas.ca

24 Hour Info Line: 604-734-7469

Scotiabank Theatre

900 Burrard Street

www.cineplex.com/Theatres/TheatreDetails/Scotiabank-Theatre-Vancouver.aspx

(604) 630-1407

Vancouver's go-to theatre. Located downtown.

Science World

1455 Quebec Street

www.scienceworld.ca/

604-443-7443

A hard to miss, giant silver ball, located a 1/4 mile south of the Main street sky train station. A Vancouver favourite, it features many exciting and eye-opening scientific activities, inventions and shows.

www.hellobc.com



Activities, Entertainment & Shopping

Dr. Sun Yat-Sen Classical Chinese Garden

578 Carrall Street

www.vancouverchinesegarden.com

(604) 662-3207

This lovely garden provides unique cultural experiences for visitors and the community through a lively series of garden tours, events, cultural exchanges and educational programs.

Admission: adults \$14, seniors \$11, students with valid ID \$10 and children under 5 free

Capilano Suspension Bridge

555 Columbia Street

This bridge stretches across for 137 metres, sitting 70 metres above the Capilano River.

Admission: adults \$32.95, seniors (65+) \$30.95, students with ID (17+) \$26.95, youth \$21.95 (13-16), children (6-12) \$12

Call 604-658-8880 for further information.

Vancouver Art Gallery

750 Hornby Street

<http://www.vanartgallery.bc.ca>

604-662-4719

International and local talents present a variety of exhibitions and collections that highlight BC's contemporary artists including an extensive Emily Carr exhibit.

Summer Admission: adults \$22.50, seniors \$17, students \$16, children (5-12) \$7, Tuesdays after 5pm is by donation. Open daily 10am - 5pm and Tuesdays 10am - 9pm.

Vancouver Public Library

350 W. Georgia Street

<http://www.vpl.ca>

604-331-3603

The Vancouver Public Library (VPL) has several branches all over Vancouver. The central library is located southwest of Queen Elizabeth theatre and between Georgia and Robson. This massive architectural gem houses an enormous collection of books and comfortable spaces for quiet reading. See the website for the locations of the many VPL branches and their hours.

Vancouver Aquarium in Stanley Park

845 Avison Way

www.vanaqua.org

604-659-3474

Open 9:30am to 7:00pm daily.

Admission: adults \$21, youths, students, and seniors \$16, children over 3 year old \$11.95. Children 3 years and under FREE.

Seawall

The seawall refers to the 22km (13.7 miles) walking, jogging, cycling and inline skating path that lines Vancouver's waterfront from the convention centre on Burrard Inlet (Coal Harbour), around Stanley Park and False Creek, past Granville Island and ending at Kitsilano Beach Park. It is the most popular recreational facility in Vancouver.

Queen Elizabeth Park

4600 Cambie Street

(604) 257-8400

<http://vancouver.ca/parks/parks/queenelizabeth/attractions.htm>

Kitsilano Beach

1299 Arbutus St

vancouver.ca/parks/rec/beaches/kitsb.htm

English Bay

Beach Avenue between Gilford and Bidwell Streets
vancouver.ca/parks/rec/beaches/english.htm

Stanley Park

vancouver.ca/parks/parks/stanley/

Vancouver's beloved Stanley Park is an evergreen oasis of 400 hectares close to the downtown core. Go for a walk or bike and enjoy the scenery.

For more Information:
www.tourismvancouver.com/visitors/

Transportation

Car Rental

- :: **Budget Car Rental** - www.budget.ca
calling within Canada: 1-800-268-8900
calling within US: 1-800-472-3325
- :: **National Car Rental** - www.nationalcar.ca
1-877-222-9058
- :: **Lo-Co\$t Rent-A-Car** - www.locost.com
1-888-556-2678
- :: **Discount Car and Truck Rentals**
www.discountcar.com
604-310-2277
- :: **Thrifty** - www.thrifty.com
calling within US & Canada: 1-800-847-4389
calling internationally: 1-918-669-2168
- :: **Rent-A-Wreck** - www.rentawreck.ca
1-800-327-0116
- :: **Zip Car** - www.zipcar.com/vancouver
Rates vary from \$7/hr to \$69/day.
Gas, insurance and maintenance are included.
- :: **modo. the car co-op**
<https://ubc.ride-share.com/en/my/index.php>

Bicycle Rental

- :: **Bike Co-Op (on campus!)** - www.bikecoop.ca
6138 Student Union Boulevard
ubc.bikecoop@gmail.com
604-822-2453 (that's 604-822-BIKE)
- :: **Different Bikes**
1421 West Broadway
604-737-2344
- :: **Spokes** - www.spokesbicyclerentals.com
1798 West Georgia Street
www.spokesbicyclerentals.com
604-688-5141



:: UBC Bike Kitchen

6138 Student Union Boulevard (downstairs)
www.thebikekitchen.com
604-827-7333

Plan your bike routes out with this site:
<http://www.cyclevancouver.ubc.ca/cv.aspx>

Taxi Cabs

- :: Yellow Cab
604-681-1111
- :: Black Top & Checker Cabs
604-683-4567
- :: MacLures Taxi - www.maclurescabs.ca/
604-683-6666
- :: Vancouver Taxi
www.vancouvertaxi.ca
604-871-1111

Public Transit

Bus, Sea Bus and Sky Train Service. Call Customer Info for specific directions or follow the bus route map to where you want to go.

Translink Customer Information

www.translink.bc.ca
604-953-3333 (save this # to your cell in case you get lost - an operator will be available to help between 6:30am-11:30pm)
Lost Property? Call 604-682-7887

Being a Part of PIMS

PIMS Lounge

The PIMS facility at UBC is comprised of staff and researchers' offices, two lounges, a library/small classroom, and two seminar rooms. You are welcome to use the PIMS lounges at any time. Regular coffee, tea and bottled water are provided - please help yourself. Self-serve espresso is available in the 2nd floor lounge. Payment is by the honour system, and you will find the price (just \$1 per cup) to be lower than most places on campus. You may use the notebook on top of the espresso machine to keep track of your coffee purchases. You will receive an invoice approximately monthly. We do ask that you clean up after yourself whenever you use a common area (wash your dishes, place dishes in the dishwasher, wipe up your crumbs and spills, wipe splatter out of the microwave, etc.). Please remember at the end of the day to return your coffee mug to the dishwasher in the 1st floor lounge to be cleaned.

PIMS Tea

PIMS hosts a Tea each Wednesday afternoon from September to May. The Tea is held at 2:45pm in the PIMS lounge on the 1st floor. Tea, coffee and a variety of fruits are enjoyed by PIMS staff and researchers and guests from other departments. All are welcome to join us.

Beer Seminar

Once a month, PIMS hosts a Beer Seminar at Koerner's Pub. Watch the bulletin board in the reception area for dates and times.

Recycling and Garbage

UBC recycles. Boxes and bins for recycling paper/cardboard and glass/metal are available. You are responsible for emptying the waste basket and recycling bin in your office. (UBC does not allow the custodial staff to do this for you.) Please do not empty your recycling and waste in the reception, copy room or other areas.

Your Office Hours

If you teach a course, please hold your office hours in the Math department, not in your PIMS office. The Mathematics office meeting rooms are located in LSK 202. Rooms A & B are dedicated for office hours, Room C for drop-in tutorials. There is a posted schedule for rooms A & B, so please write your name in the timeslot you want.

Printing/Scanning/etc

PIMS has stationery, a fax machine, scanner, printer, photocopier, binder, and laminator for your use - ask the receptionist for assistance. (If you are teaching a course, please use the photocopier in your department for course material).

"Science" is the laser printer in the 2nd floor lounge and "Lab" is the laser printer in the 1st floor lounge. Always ask the receptionist to print your transparencies for you.

For personal use, please leave 5 cents/page in the payment bottle.

Lights Out!

Lastly, always lock-up and check that all lights are out when you leave for the night.

Contacts

PIMS tel: 604-822-3922 & PIMS fax: 604-822-0883

Director

Alejandro Adem (WMAX 201)
director@pims.math.ca

604-822-3782
hoek@pims.math.ca

Deputy Director

George M. Homsy (WMAX 203)
604-822-21369
bud@pims.math.ca

MITACS Theme Leader (Finance)

John Walsh (WMAX 200A)
604-822-3782
walsh@math.ubc.ca

Assistant Director

Mark Gotay (WMAX 200C)
604-822-4467
gotay@pims.math.ca

Program Assistant

Lillian Yang (WMAX 205)
604-822-0402
reporting@pims.math.ca

Manager, Finance and Administration

Rebecca Cadwalader (WMAX 204)
604-822-1522
rebecca@pims.math.ca

Systems and Video Conferencing Manager

Ian Allison (WMAX 207)
604-822-3469
iana@pims.math.ca

Communications Manager

Karen Manders (WMAX 200B)
604-822-6851
karen@pims.math.ca

Executive Assistant

Do-Rim Joo (WMAX 200)
604-822-3922
reception@pims.math.ca

Program and Events Coordinator

Oriana Bella (WMAX 205)
604-822-3611
orianab@pims.math.ca

BC Education Coordinator

Melania Alvarez-Adem (WMAX 209)
604-822-0404
melania@pims.math.ca

Education Facilitator

Klaus Hoechsmann (WMAX 200A)

UBC Departmental Contacts

Mathematics Department:

(604) 822-2666

Statistics Department:

(604) 822-0570

Computer Science Department:

(604) 822-9289

Physics & Astronomy Department:

(604) 822-3853

Institute for Applied Math:

(604) 822-4584





Map from www.johomaps.com

